

FLIP200F

KICK RAILS AND WHEEL CHOCKS

Revision: 4 November 2024 10:46 AM
Boplan reference: PL2020...

PRODUCT SPECIFICATIONS

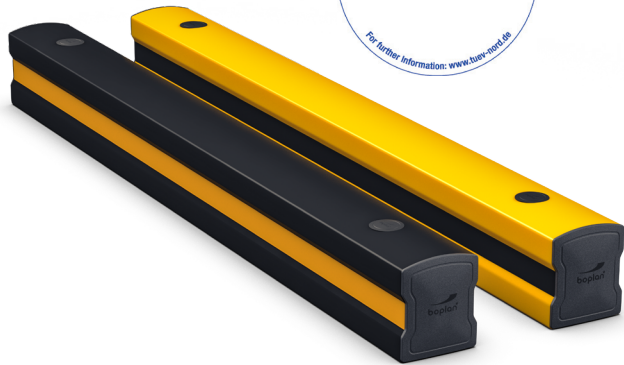
APPLICATION	
Environment	Ground level protection <ul style="list-style-type: none"> - Wall protection (refrigerator walls, decorative walls, sandwich panels) - Wheel guide for pallet trucks or trolleys in busy traffic lanes - Protection of machines and infrastructure - Below a Boplan traffic barrier system - Indoor and outdoor use - Food Industry
MATERIAL	
Plinth	Extrilene® - UV resistant - Fire class E* - Non conductive - Impervious to most chemicals**
Endcap	Sustainable elastomer
STANDARD COLORS	
Plinth	Yellow - Black / Black - Yellow

*Classification according to EN 13501-1:2007 +A1:2009 - Fire classification of construction products and building elements.


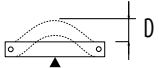

**Ask your local sales office for resistance to specific chemicals.



		FIXATIONS	
		ZC (Zinc coated)	SS (Stainless steel)
STANDARD	Concrete screw	 Ø17mm x 130mm	Not available
ALTERNATIVE	Wedge Anchor	 Ø18 (M12) x 130mm	Not available



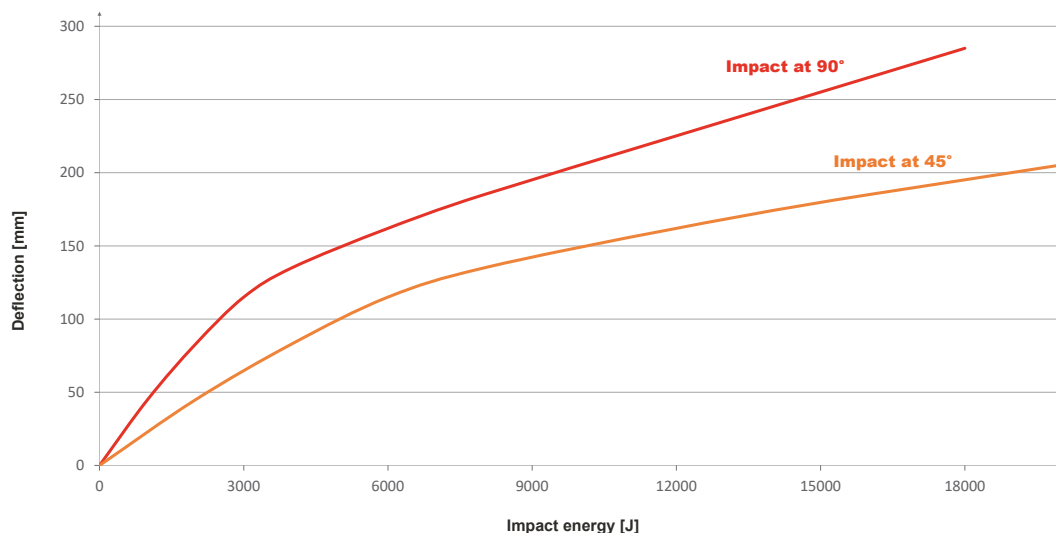
FEATURES AND FUNCTIONALITY - FLIP200F

boplan IMPACT LABEL FOR SAFETY BARRIERS		
BOPLAN FLIP200F		
IMPACT RATING	45°	90°
E50	< 50 kJ	
E40	< 40 kJ	
E30	< 30 kJ	
E25	< 25 kJ	
E20	< 20 kJ	22 kJ
E15	< 15 kJ	17 kJ
E12	< 12 kJ	
E10	< 10 kJ	
E7	< 7.5 kJ	
E5	< 5.0 kJ	
E2	< 2.5 kJ	
E1	< 1.0 kJ	
IMPACT RESULTS Deflection at 90°: 285 mm / 11.22 Inch At maximum impact energy 		
TEST CONDITIONS TEMPERATURE: 20°C / 68°F IMPACT HEIGHT: 88 mm / 3.46 Inch → D: 285 mm / 11.22 Inch TEST FLOOR: CONCRETE SLAB C25/30 - 150 mm / 6 Inch FIXATION: CONCRETE SCREW Ø17 x 135 mm		
TEST VEHICLE: TYPE: BOPLAN IMPACT TEST VEHICLE WEIGHT: 3869 Kg / 8529.68 lbs SIZE (L x W x h): 3100 x 1100 x 1150 mm / 122 x 43.3 x 45.3 Inch CONTACT AREA, STEEL BUMPER WIDTH: 1000 mm / 39.4 Inch		
SUCCESS CRITERIA VEHICLE STOPPED ASI (ACCELERATION SEVERITY INDEX) < 0.5		
BOPLAN TEST LAB Muizelstraat 12 8560 Moorsele Belgium Approved by: TÜV NORD Systems PAS 13:2017 compliant  IL-FLIP200F-20230319		

REQUIREMENTS	
Concrete quality	minimum C25/30
Concrete floor plate thickness	minimum 150 mm
Operational temperature	+5°C up to +40°
Water and humidity	Zinc coated fixations: indoor and outdoor use in most environments

SIZE	
Height	205 mm
Profile section	205 mm x 174 mm (10 thick)
Standard rail length	1000 mm - 2000 mm - 3000 mm (other sizes: 500 - 2999 mm)

Deflection curve

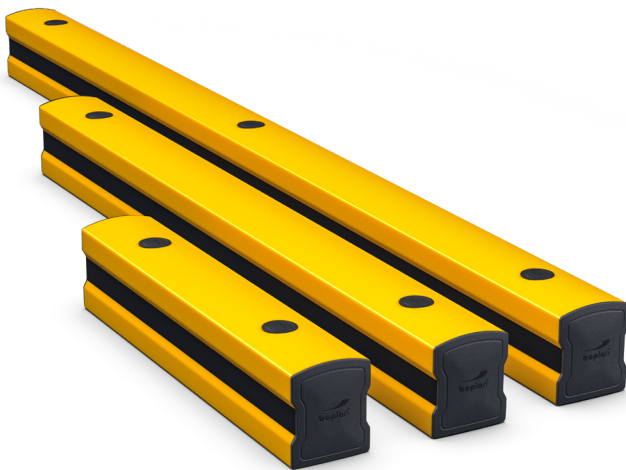
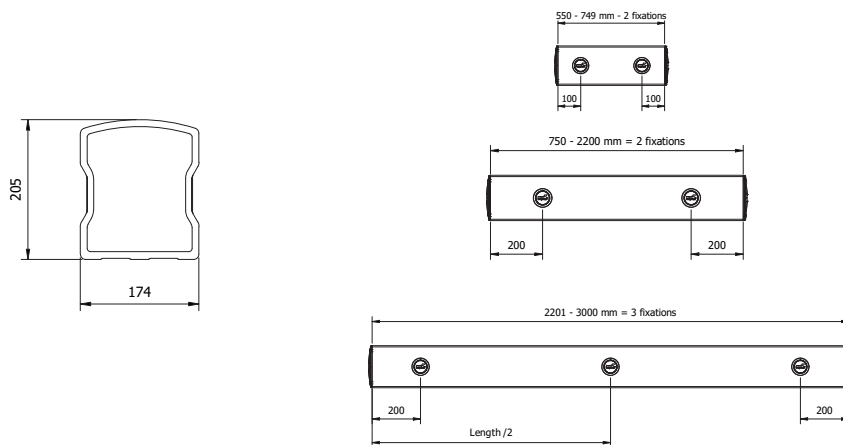


See impact label for detailed information on the test conditions.

REFERENCE LIST - FLIP200F

	YELLOW/Black	BLACK/Yellow
500mm (2fix)	PL2020-0500-0002YB	PL2020-0500-0002BY
1000mm (2fix)	PL2020-1000-0002YB	PL2020-1000-0002BY
2000mm (2fix)	PL2020-2000-0002YB	PL2020-2000-0002BY
3000mm (3fix)	PL2020-3000-0002YB	PL2020-3000-0002BY

	YELLOW/Black	BLACK/Yellow
550-749mm (2fix)	PL2021-0749-0002YB	PL2021-0749-0002BY
750-2200mm (2fix)	PL2021-2200-0002YB	PL2021-2200-0002BY
2201-2999mm (3fix)	PL2021-2999-0002YB	PL2021-2999-0002BY



FEATURES AND FUNCTIONALITY - FLIP200F - TB BASE SPACER

APPLICATION

Environment	The TB Base Spacers are specifically designed to fit underneath the end-and mid-posts of the TB400 series. By raising the baseplates, it creates additional space beneath the tube, allowing you to seamlessly integrate the FLIP200F, expanding the device's functionality.
Compatibility	TB400 - series

REFERENCE LIST

PL0099-0180-0180BLPE	TB Base Spacer - TB400 MP - 180x180mm - Black - HDPE
PL0099-0275-0275BLPE	TB Base Spacer - TB400 EP - 275x275mm - Black - HDPE
PL0099-0300-0220BLPE	TB Base Spacer - TB400 MP - 300x220mm - Black - HDPE
PL0099-0320-0275BLPE	TB Base Spacer - TB400 EP - 320x275mm - Black - HDPE

